



Reducing the environmental impact of
mining and exploration while preserving
the integrity of your core





SCAN THE QR CODE FOR MORE DETAILS

DISCOVERER®

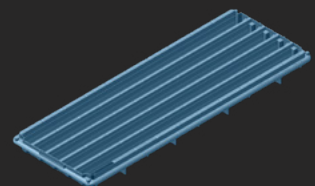
EXCELLENCE SINCE 1993

PRESERVING CORE INTEGRITY

The Discoverer® Core Tray is the world's most established brand of Plastic Core Tray. Built with safety and ease of handling in mind, it can withstand the rigors of extreme weather conditions. The Discoverer® is engineered to sit exposed to the elements in the field for over 50 years. It's completely wet-rot resistant; where wax cardboard and wooden boxes need particular care, plastic core trays require no such caution and protection. The Discoverer® is tough, durable, and will preserve the integrity of your core.

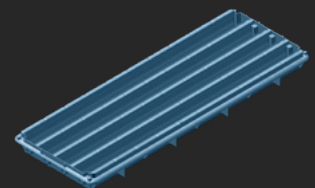
REDUCING ENVIRONMENTAL IMPACTS

Discoverer® Core Trays are made from recycled plastic, allowing you to incorporate sustainability in your value chain and fulfilling your corporate social responsibility. Discoverer® Core Trays are saving 1.5 million kilograms of plastic from entering landfill every year, and the movement just started: **Our next goal is 25 million kilograms by 2030.**



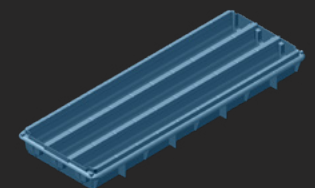
NQ Core Box

Channel Diameter: 52.5mm
Core Capacity: 5 metres
Weight: 2.3kg
Pallet Qty: 114 (2240mm high)



HQ Core Box

Channel Diameter: 65mm
Core Capacity: 4 metres
Weight: 2.4kg
Pallet Qty: 93 (2270mm high)



PQ Core Box

Channel Diameter: 86.5mm
Core Capacity: 3 metres
Weight: 2.4kg
Pallet Qty: 66 (2280mm high)

Code	Available Sizes	Unit
PLACTS4N	Plastic Discoverer® 4 Core Trays/Boxes Size NQ/NQ2, 114/Pallet	EACH
PLACTS4H	Plastic Discoverer® 4 Core Trays/Boxes Size HQ, 93/Pallet	EACH
PLACTS4P	Plastic Discoverer® 4 Core Trays/Boxes Size PQ, 69/Pallet	EACH



Lifetime Warranty applies when Core Trays are used as intended, which is for storing, transporting, logging of core and being structurally sound. Excludes Core Trays being emptied and reused time after time.

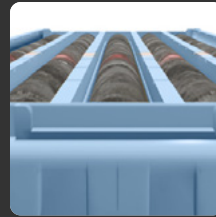
The Discoverer® Difference

The **Discoverer® Core Tray** has been proven in the field since 1993 and used by the world's leading mining companies. Designed and engineered for ease of use, safety in the field and the harshest climates, these core trays are manufactured to exacting standards to give you the best in core storage.



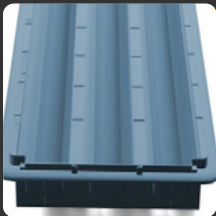
Tru Identiti™

The inbuilt stencil eliminates illegible handwriting, and enables geological imagery software to auto-name core tray images with Hole ID, Tray #, To & From depth.



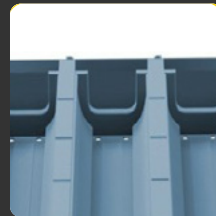
Core Scanning Compatible

The tray's rigid rows make for a perfect scanning platform. This design allows the scanning head to capture the entire length of the core.



Ergonomic Gripbar

Enables users to lift from their natural lifting position anywhere around the perimeter of the tray, making it safer and easier to carry even when filled with core.



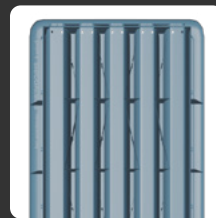
Drainage Holes

There are drainage holes at both ends to help your core to dry out and remain stored in premium condition.



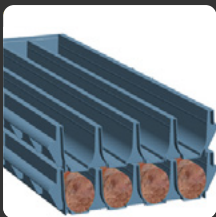
No Logging Errors

The Bold Start Indicator ensures the driller starts the core run in the correct sequence.



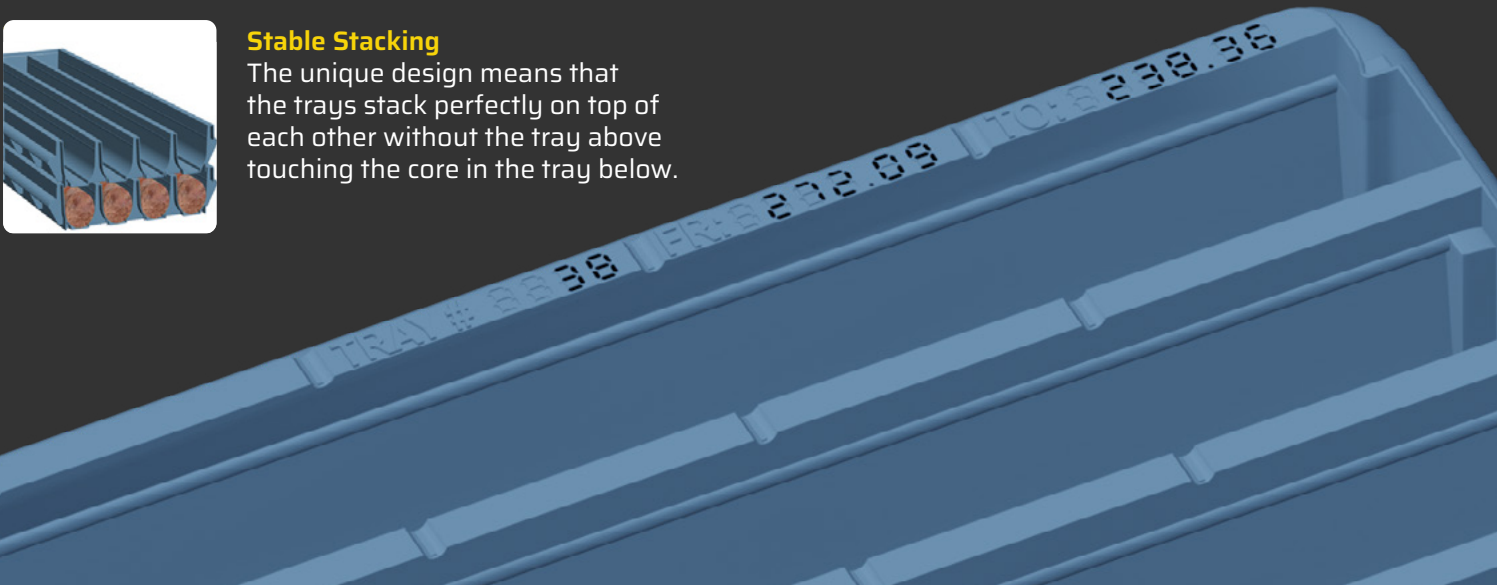
Roller Racking Friendly

The core tray has a flat bottom, ensuring smooth movement across rollers and ball transfer tables so as not to disturb the core samples.

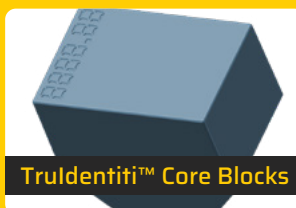


Stable Stacking

The unique design means that the trays stack perfectly on top of each other without the tray above touching the core in the tray below.



Discoverer® Accessories



TruIdentiti™ Core Blocks



Lids and Lid Clips



Core Tray ID Tags

4C Series 3 Plastic Core Trays

The two-row 4C size (101.6mm) Plastic Core Trays are perfect for large and heavy diamond core extracted in a typical coal exploration project.



SCAN THE QR CODE FOR MORE DETAILS

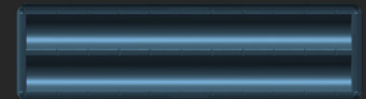


OH&S COMPLIANT

The safer option for hard rock geo teams drilling core for bulk metallurgical sampling & still using metal core trays. In collaboration with BHP Mitsubishi Alliance (BMA), we've developed this tray as the safest and most user-friendly option, meeting all their strict criteria.

EVERY WAY A DISCOVERER® SERIES 3

- Flat bottomed to roll along smoothly along racking
- Has continuous grip bar running around the tray for easy handling
- Designed with patented interlocking bracing for integral strength
- Built for stable stacking
- Has drainage holes to keep your core dry



Technical Specifications

Can fit 1m of core in each row, as well as core foam (as required) into the extra 50mm at the ends.

- OD: 1120L x 320W x 125H mm
- Channel Diameter: 110mm
- Core Capacity: 2 metres
- Colour: Grey
- Weight: 2.5kgs
- Pallet Qty: 64

Code	Available Sizes	Unit
PLACTS34C	Plastic Discoverer® 3 Core Trays/Boxes Size 4C, 64/Pallet	EACH



Lifetime Warranty applies when Core Trays are used as intended, which is for storing, transporting, logging of core and being structurally sound. Excludes Core Trays being emptied and reused time after time.

Heavy Duty Plastic Pallets



SCAN THE QR CODE FOR MORE DETAILS



White Ant/
Termite Proof

Exact Size to Suit
Core Trays

Built for
Tough Mining
Conditions

UV Stabilised

Nail & Splinter
Free

DEVELOPED WITH MINERS

Born out of the need for core storage by geological teams without a shed, these pallets are built to sit outdoors for years.

HARD-WEARING YET LIGHTWEIGHT

They have a 4-way entry that makes for easy handling using a forklift or pallet jack. Solid and sturdy with very high chemical resistance.



Technical Specifications

- Size: 1200L x 1100W x 150H mm
- 4 way entry for easy handling with forklift or pallet jack
- Robust but lightweight: 17kg
- SWL: Static: 4000kg
Dynamic: 1000kg
- Very high chemical resistance, particularly against acids and alkalis

Code	Available Sizes	Unit
PLTDIS	Discoverer® Heavy Duty Plastic Pallets 1200L x 1100W x 150H mm	EACH



Lifetime Warranty applies when Plastic Pallets are used as intended, which is for storing of plastic core trays up to the SWL on the ground in an external environment and warranties structural soundness. Excludes Pallets being reused time after time for transportation of goods.

Automatic Core Saw

World's most advanced technology. Maximum efficiency.
Safety that's second to none.



SCAN THE QR CODE
FOR MORE DETAILS



Key Product Benefits



Controllable feed rate for
varying rock types



Cut core at double speed,
increase productivity



Total ease of maintenance



Suitable for all drill core sizes



Safe and stable operating
environment

ANTI JAM

The only core saw that won't jam whether in forward or reverse mode. An easy pull-back of the core guide no matter how far it has gone back on the gully ensures no jam and less downtime.

Code	Available Sizes	Unit
DYNOAUTO	Corewise Automatic 415volt, 3 Phase Core Saw	EACH
DYNOATNK	Corewise Automatic Recirculation Tank, including Pump	EACH

OTHER FEATURES:

- The only saw that can cut PQ sized core, on top of BQ, NQ and HQ
- Saw is fitted with dynamic braking for safety
- LCD screen monitors both motors while operating, and advises correct feed speed depending on hardness of core
- Continuous chain feed system allows for feeding core instantly
- New 110mm gully ensures core guide will not ride up while operating
- Constructed from galvanised and stainless steel
- Has external grease points fitted for easy in-house maintenance

Diamond Core Saw Blades

Premium Core Cutting Blades

Cut your core samples faster with these premium diamond blades that are produced specifically for the mineral core industry. Suitable for any core saw, both automatic and manual.

The Discoverer® 'Sound Dampened' Blade range use sound suppressing technology within the blade structure. This means that it

cuts core at lower decibels than a standard blade. Ideal for core facilities where core cutting takes place in the core logging vicinity.

They may come with a premium price tag, but they are proven to last longer and cut faster, likely making it the lowest cost per metre blade in today's market.



SCAN THE QR CODE FOR MORE DETAILS

Recommendation Guide	Type 1	Type 2	Type 3	Type 4	Type 5
<p>✓✓ Highly Recommended</p> <p>✓ Recommended (Not for continual use)</p> <p>✗ Not Recommended</p>	Tuff, Shale, Gypsum, Clay, Polish, Talc, Soft Sandstone, Calcite and Soft Sandstone	Marble, Schist, Limonite, Weathered Granite, Siliceous Schist, Serpentine, and Phylites	Siliceous Volcanics, Hard Schist, Hard Limestone, Gneiss, Basalt, Andesite, Pegmatite	Quartzite, Rhyolite, Tonalite, and Aplite	Chert, Quartz, Red Granite, Jasperite, Strongly Silicified, Glassy Highly Altered, Intrusives and Volcanics
Discoverer® - CBLDS Medium-Soft Abrasive	✓✓	✓✓	✗	✗	✗
Discoverer® - CBLDS Very Hard	✗	✓	✓✓	✓✓	✗
Discoverer® - CBLDS Ultra Hard	✗	✗	✗	✓	✓✓

Code	Available Sizes	Unit
CBLDA12	Discoverer Core Cutting Blade - Ultra Hard 12" (300mm) - Metallic Blue	EACH
CBLDM12	Discoverer Core Cutting Blade - Very Hard 12" (300mm) - Metallic Green	EACH
CBLDS12	Discoverer Core Cutting Blade - Medium to Abrasive 12" (300mm) - Metallic Purple	EACH
CBLDA125	Discoverer Core Cutting Blade - Ultra Hard 12" (300mm) - Metallic Blue- Sound Dampened	EACH
CBLDM125	Discoverer Core Cutting Blade - Very Hard 12" (300mm) - Metallic Green - Sound Dampened	EACH
CBLDS125	Discoverer Core Cutting Blade - Medium to Abrasive 12" (300mm) - Metallic Purple - Sound Dampened	EACH
CBLDA14	Discoverer Core Cutting Blade - Ultra Hard 14" (350mm) - Metallic Blue	EACH
CBLDM14	Discoverer Core Cutting Blade - Very Hard 14" (350mm) - Metallic Green	EACH
CBLDS14	Discoverer Core Cutting Blade - Medium to Abrasive 14" (350mm) - Metallic Purple	EACH

Medium-Abrasive Very Hard Ultra Hard



Core Holders

For heavy-duty core saw cutting



SCAN THE QR CODE FOR MORE DETAILS



Perfect for any brand of Automatic Core Saw, these Core Holders can carry both competent (V-Core Holder) and damaged core (Broken Core Guide).

Designed to endure rigorous core cutting, their end-plate handles are

impossible to bend, and their hinges are proven to cope with constant opening and closing. Users say they outlast other brands by 3-4 times!

These core holders come in PQ & LTK60/NQ3 sizes that are both first in the market.

Key Product Benefits

- Made to endure the tough, rigorous mining environment.
- One-piece, mild steel, end plate handles - impossible to bend or change shape.
- Heavy duty hinges to cope with constant opening and closing all day.
- PQ & LTK60/NQ3 core holder sizes are both unique sizes in the market.

Code	Available Sizes	Unit
BKNCGP-H	Discoverer® Plastic Broken Core Guide HQ (63.5mm) - Light Blue	EACH
BKNCGP-N2	Discoverer® Plastic Broken Core Guide NQ2 (50.7mm) - Orange	EACH
BKNCGP-LT	Discoverer® Plastic Broken Core Guide LTK60/NQ3 (45.1mm) - Dark Green	EACH
BKNCGP-P	Discoverer® Plastic Broken Core Guide PQ (85mm) - Dark Blue	EACH
BKNCGP-N	Discoverer® Plastic Broken Core Guide NQ (47.6mm) - Red	EACH
BKNCGP-H3	Discoverer® Plastic Broken Core Guide HQ3 (61.1mm) - Yellow	EACH
AUTCGP-P	Discoverer® Plastic Open Top Core Guide PQ (85mm)	EACH
AUTCGP-N	Plastic V-Core Guide HQ/NQ/NQ2	EACH

Note: : These Core Holders are sometimes referred to as 'Core Boats', Core Cutting Boats, Core Carriers, Flip Top Core Carriers or Core Guides. Regardless of the name, we can provide them to be suitable for both the Almonte or the Corewise Automatic Core Saw. Just advise which brand of saw you have upon ordering.

Manual Core Saws

Specially made for rigorous core cutting

A piece of machinery that has a long history of durability in many mining and exploration sites with low-volume core cutting requirements.



SCAN THE QR CODE
FOR MORE DETAILS

Code	Available Sizes	Unit
S11PH	Series 1 Electric Single Phase Core Saw Folding Leg Stand	EACH
S13PH	Series 1 Electric Three Phase Core Saw Folding Leg Stand	EACH
S1PET	Series 1 5.5HP Petrol Core Saw Folding Leg Stand	EACH
S21PH	Series 2 Electric Single Phase Core Saw Fixed Solid Leg	EACH
S31PH	Series 3 Electric Single Phase Core Saw Fixed Solid Leg	EACH
S33PH	Series 3 Electric Three Phase Core Saw Fixed Solid Leg	EACH
S3PET	Series 3 5.5HP Petrol Core Saw Fixed Solid Leg	EACH

Series 1

Has detachable folding legs and built-in handles at the sides for portability. Built for teams that move around.

Specifications

1530H x 550W x 980L mm
93 kg
Blade Capacity: 300-350 mm
Max Cutting Depth: 110 mm
Max Cutting Length: 420 mm
Tool Speed RPM: 2800

Series 2

Identical to the Series 1 but with fixed solid legs. A longer-term saw for small exploration programs.

Specifications

1530H x 550W x 980L mm
93 kg
Blade Capacity: 300-350 mm
Max Cutting Depth: 110 mm
Max Cutting Length: 420 mm
Tool Speed RPM: 2800

Series 3

The biggest and most powerful saw in the range. Made for projects that require extended periods of core cutting.

Specifications

1540H x 570W x 1350L mm
140 kg
Blade Capacity: 350-500 mm
Max Cutting Depth: 210 mm
Max Cutting Length: 490 mm
Tool Speed RPM: 2200



Key Product Benefits

- Solid frame construction out of 3mm laser cut profile leading to increased stability
- Cutting deck trolley with heavy duty aluminium, tilt-lock wheels for accurate and stable cut
- Water return channels ensure clean and dry area, improving user comfort
- Fully-protected blade support shaft for user safety and bearings protection
- Spring-loaded cutting head actioned by foot pedal or cutting handle for shock-free cutting, good pressure control, and better cutting quality
- Crank-controlled cutting depth adjustment and head locking device for accurate cutting depth adjustment and straight-through cutting

Core Orientation Device (Rocket Launcher)



SCAN THE QR CODE
FOR MORE DETAILS

The core orientation device for measuring core structures accurately

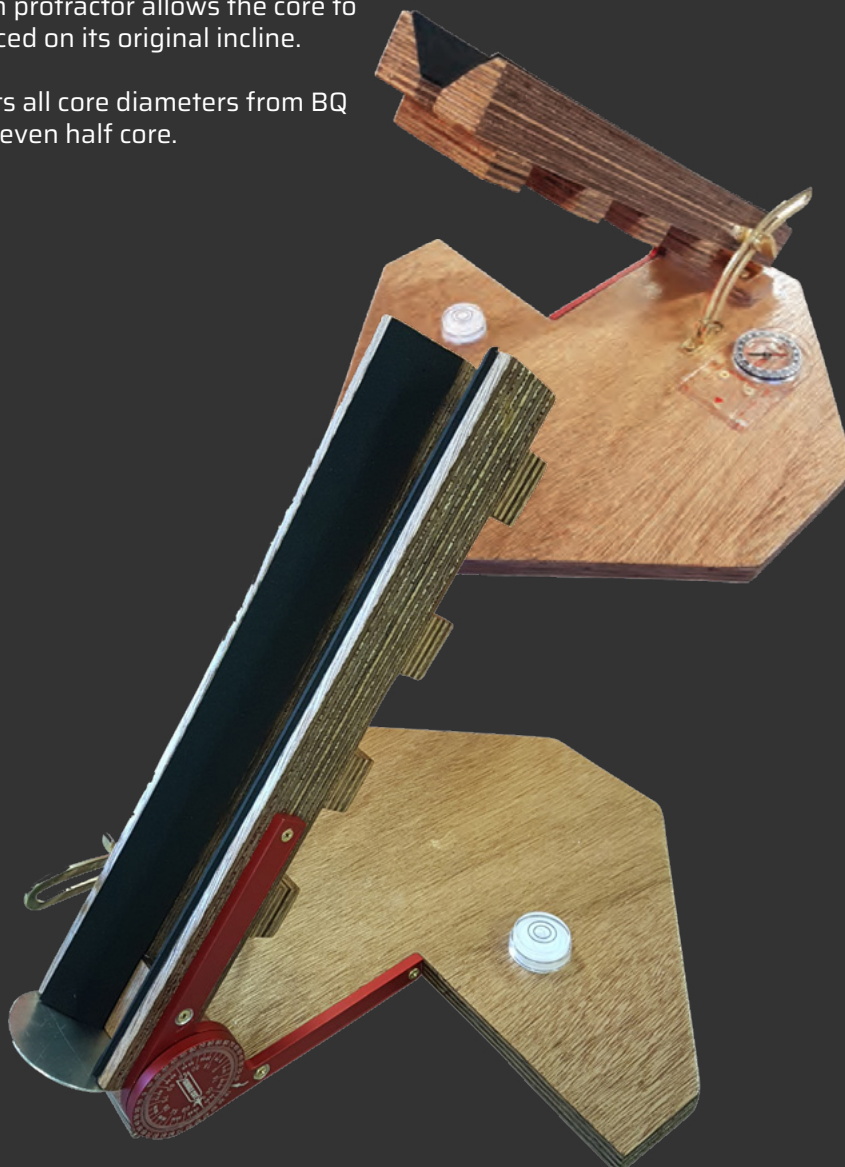
The Discoverer® Core Orientation Device was developed to allow users to measure all relevant core structures with the core placed in the same situation as it was in the ground. It features a Suunto A-10 Base Plate compass that provides a bearing so that you can situate the device with the same heading as the azimuth of the core, while a built-in protractor allows the core to be placed on its original incline.

Accepts all core diameters from BQ to PQ, even half core.

Code	Available Sizes	Unit
CORERKT	Core Orientation Device (Rocket Launcher)	EACH

Key Product Benefits

- High quality non-ferrous brass fittings
- Hand-built in Western Australia from durable marine plywood
- Built-in Suunto A-10 compass with adjustable bezel
- Housed in a rugged, heavy duty lockable case with Pick and Pluck foam

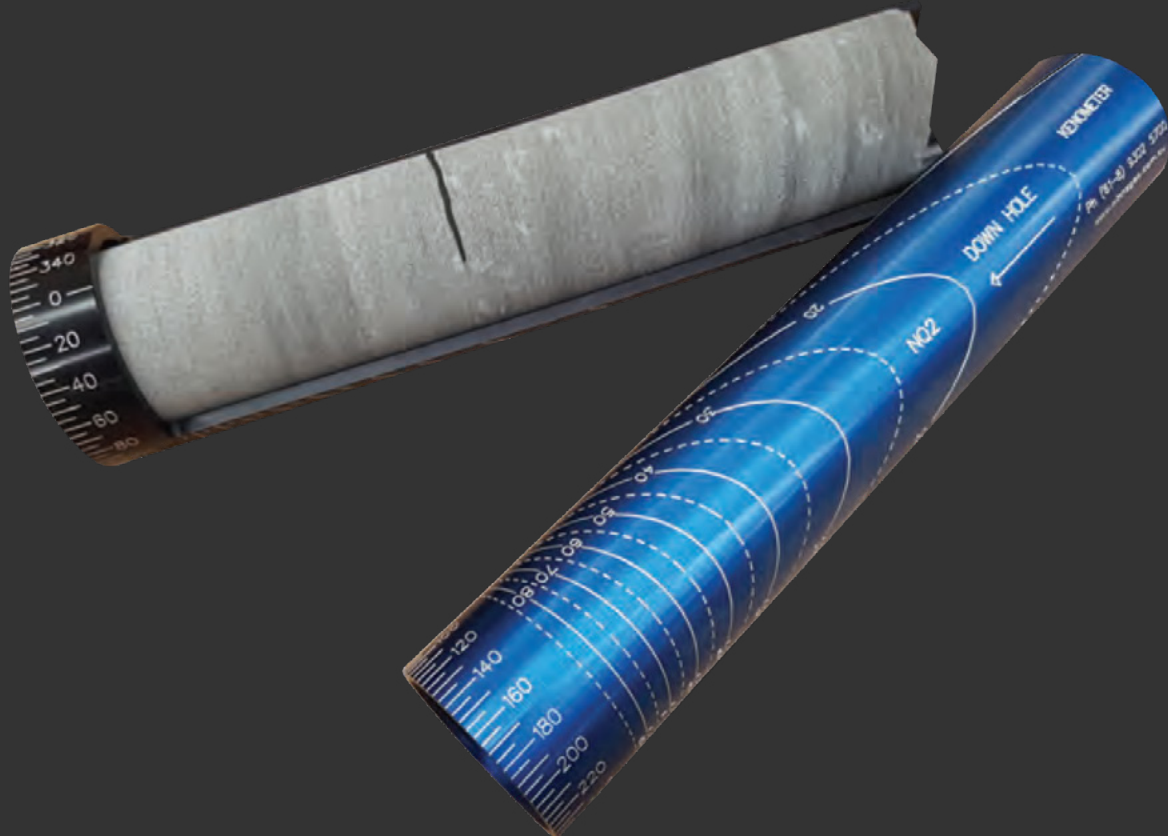


Kenometer Core Orientation Tool (Alpha and Beta)

Spend less time reading and analysing core



SCAN THE QR CODE FOR MORE DETAILS



The user-friendly core orientation tool that's designed to take both alpha (structure) & beta (rotational) measurements simultaneously.

The anodised coating is hard, durable, will never peel, and, under normal conditions, will never wear; its aluminium body gives it an appropriate strength-to-weight ratio. What's more, the Kenometer is specifically contoured to core shapes, so protractor measurements are more accurate as they are closer to the original curve of the core.

Code	Available Sizes	Unit
KENO-HQ	Kenometer Core Orientation Tool HQ	EACH
KENO-NQ	Kenometer Core Orientation Tool NQ2	EACH
KENO-NQCONV	Kenometer Conversion Kit (N2 to N or H to H3) 0.95mm (3/Kit)	EACH
KENO-NH3	Kenometer Conversion Kit (N2 to N3) 1.95mm (3/Kit)	EACH

Key Product Benefits

- Anodised alloy body for brilliant strength & durability in the field
- Ellipses on the back of the body allow quick measurements of the core structure (Alpha angle)
- Graduations on the head enable easy readings of the rotation angle (Beta angle)
- Laser-etched markings for precise measurements
- Kits available to convert HQ to HQ3 & NQ2 to NQ or NQ3



Lifetime Warranty applies when Kenometers are used as intended, and warranties structural soundness. Aluminium anodisation coating will greatly extend the life of the Kenometer, but excludes Kenometers rusting & corroding due to chemical reaction from sulphides, drill fluids or salt water which is beyond our control. Stored indoors, this product will last for years.

Manual SG Station

Perform bulk density readings of your core in your own time



SCAN THE QR CODE FOR MORE DETAILS



What's Included

- Scales
- Aluminium Water Bath Reservoir
- Stainless Steel Core Holding Cradle



Upgrade from the 'backyard' style of weighing bulk density over the crate and take faster measurements with this manual weighing station.

The entire unit is constructed from aluminium and the cradle is made from stainless steel, so it's built to last. The rigid weighing arm construction speeds up the scale

settle time to 5-10 seconds - a tremendous improvement over DIY specific gravity weighing devices.

The package comes complete and ready to go. Just set up in a dust-free space and get readings within minutes.

Code	Available Sizes	Unit
MANSNG	Manual Specific Gravity Weighing Station	EACH

Auto SG Station

The quickest and most consistent way to measure bulk density



SCAN THE QR CODE FOR MORE DETAILS

Technical Specifications

- Water Pump, Actuator & Scales are powered by a standard 10amp plug

What's Included

- Stainless Steel Weighing Station Unit
- Weighing Scales CBK 16 - 16kg Capacity x 0.5g Readability. Pan Size: 225 x 275 mm
- Heavy Duty Stainless Steel shelf x 1
- Power board for operating Scales, Water Pump & Actuator

The Auto SG Station is ideal for projects that deal with high volumes of core, and view SG data as an important part of their modelling process.

The scales are accurate down to four decimal places, and the reservoir and pump are designed to keep the water level

constant, giving the most accurate measurements.

The entire unit is constructed from stainless steel to enable it to last in tough mining conditions. For maintenance, all that's required is light oil to the weigh table rails as required, and the unit kept in a dust-free area to ensure accuracy.

Code	Available Sizes	Unit
AUTOSG	Discoverer® Automatic Specific Gravity Weighing (SG) Station	EACH

10ft SG Container

Keeping your Auto SG Station clean is key to its accuracy. Have your own space to measure specific gravity to maximise product and operator efficiency.

Precision is critical in taking specific gravity measurements, especially in projects where there's a high volume of core involved. With this fully airconditioned container, geos can focus on the task in a comfortable space, while keeping the Auto SG Weighing Station in pristine condition.

The unit has entry and exit portals for core trays to go in and out through roller racking that are connected to your core shed. Simply find a spot for the container beside your core shed for an uninterrupted core logging flow.



SCAN THE QR CODE FOR MORE DETAILS

What's Included:

- SG Station
- Roller Racking - Entry Racks in the door and Exit Racks out the rear
- Split system air conditioner
- Internal Lighting
- Anti Fatigue Matting
- Single Phase Power Sockets
- PVC Air Curtains

Code	Available Variants	Unit
DYNOSG+	10ft Container with Automatic SG Station	EACH



Built-in roller racking for a seamless core logging workflow



Dedicated space for the Auto SG Station



CORE PHOTOGRAPHY FRAMES

Fixed Camera Station

The frame for geos who are serious about core photography



SCAN THE QR CODE FOR MORE DETAILS

Finally, a user-friendly solution to getting excellent drill core photos every single time! This camera frame can fit any core box. Just bolt right onto your roller racking, and push trays in and out to take perfect photos every time. We can guarantee absolute consistency,

no matter who in your team captures the photo.

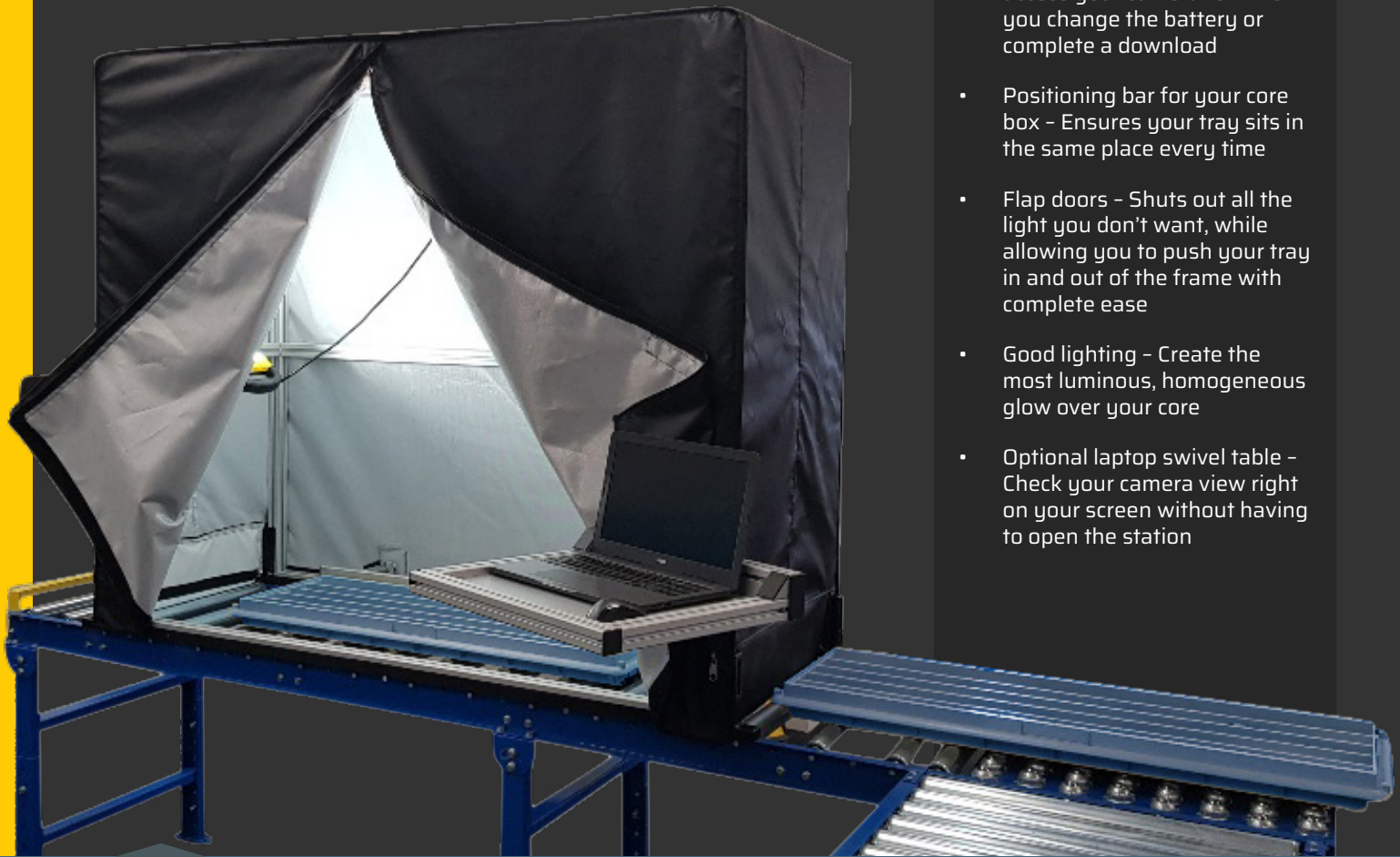
It's modular and easy to assemble. The package is a fraction of the size and will reach you in mint condition however remote your location.



Code	Available Sizes	Unit
PPFU	Discoverer® Fixed Core Photography Camera Stations	EACH

What's Included

- Quick release clamp for the camera - Lets you easily access your camera for when you change the battery or complete a download
- Positioning bar for your core box - Ensures your tray sits in the same place every time
- Flap doors - Shuts out all the light you don't want, while allowing you to push your tray in and out of the frame with complete ease
- Good lighting - Create the most luminous, homogeneous glow over your core
- Optional laptop swivel table - Check your camera view right on your screen without having to open the station



Lifetime Warranty applies when the Core Photography Frame is used as intended, and warranties structural soundness. Excludes rusting & corroding due to chemical reaction from sulphides, drill fluids or salt water which is beyond our control. Excludes the replaceable canvas cover, which nevertheless is handcrafted using heavy duty materials, and will last for years when used with due care.

CORE PHOTOGRAPHY FRAMES

Portable Camera Frame

The practical choice when portability is important

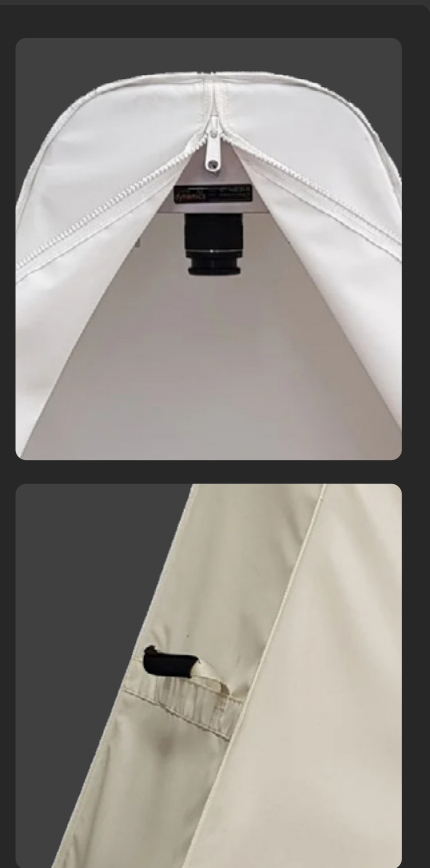


SCAN THE QR CODE
FOR MORE DETAILS

Specially designed for Discoverer Core Trays. Just pop right onto your core tray to take the perfect picture every time - no more cropping and clean-up needed!

Its aluminium frame makes it sturdy, but it's light enough to be lifted from tray to tray along your logging table. OH&S friendly.

Code	Available Sizes	Unit
CPS3	Discoverer Series® 3 Core Photography Frame (Aluminium) *including Canvas Cover/Thumb Screw for Camera	EACH
CPS4	Discoverer Series® 4 Core Photography Frame (Aluminium) *including Canvas Cover/Thumb Screw for Camera	EACH



Lifetime Warranty applies when the Core Photography Frame is used as intended, and warranties structural soundness. Excludes rusting & corroding due to chemical reaction from sulphides, drill fluids or salt water which is beyond our control. Excludes the replaceable canvas cover, which nevertheless is handcrafted using heavy duty materials, and will last for years when used with due care.

Rock Chip Trays

Store and transport percussion or RC drill chip specimens, even small rock samples, in these percussion sample chip trays.



SCAN THE QR CODE FOR MORE DETAILS

PRESERVES YOUR SAMPLES

The attached lid, with no less than 5 secure slips, ensures no sample goes astray.

BUILT TO LAST

The chip tray features a strong hinge and clasp for repeated opening and closing.

Code	Available Sizes	Unit
CHIPT20-BX	Chip Tray 20 Compartment, Box of 100 - White	BOX
CHIPT20-BXC	Chip Tray 20 Compartment, Box of 100 - Clear	BOX
CHIPT20-BXB	Chip Tray 20 Compartment, Box of 100 - Black	BOX
CHIPT10-BX	Chip Tray 10 Compartment 250mm Short, Box of 100 - White	BOX
CHIPT10-BX515	Chip Tray 10 Compartment 510mm Long, Box of 100 - White	BOX
CHIPT10-BX515C	Chip Tray 10 Compartment 510mm Long, Box of 100 - Clear	BOX
CHIPT10-BX515B	Chip Tray 10 Compartment 510mm Long, Box of 100 - Black	BOX

Technical Specifications

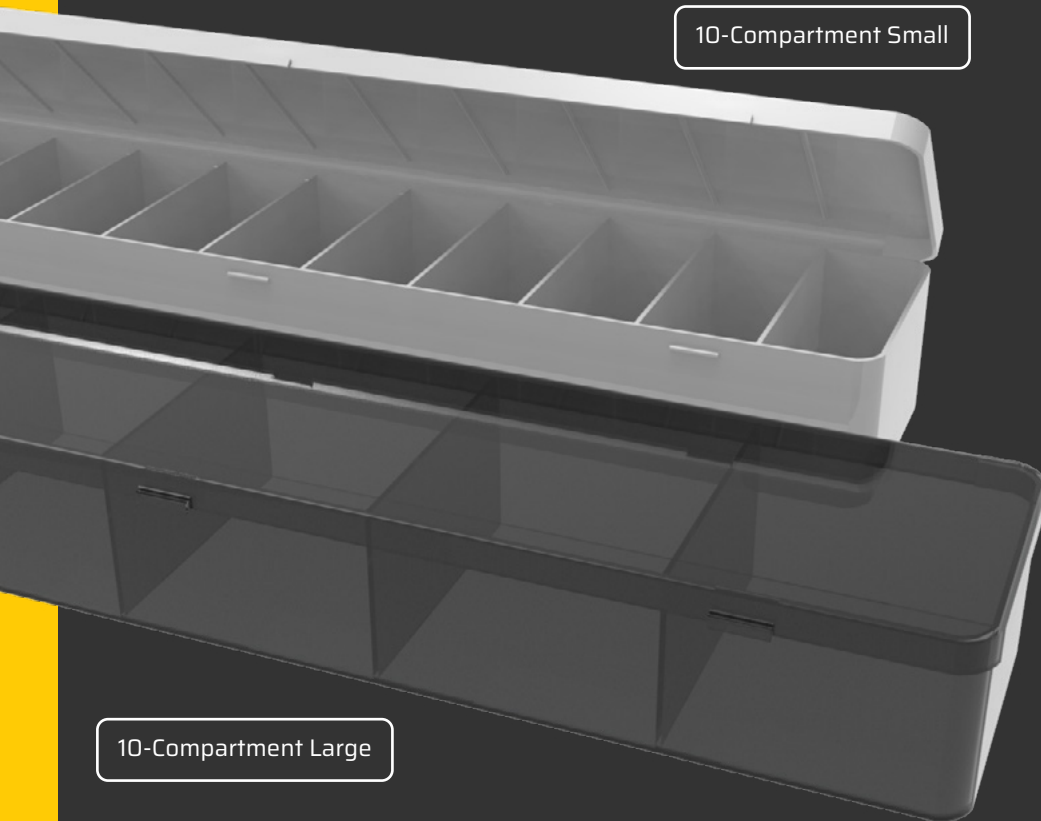
Choose from 3 types:

- 20 compartments, 505L x 55W x 33H mm, with each compartment measuring 50L x 25W x 30D mm
- 10 compartments, in 250L mm, with each compartment measuring 50L x 24W x 26D mm. Has a feature where you can join one chip tray to the next, creating a 'string' of attached trays.
- 10 compartments, in 510L mm, but with bigger individual compartments measuring 50L x 50W x 30D mm

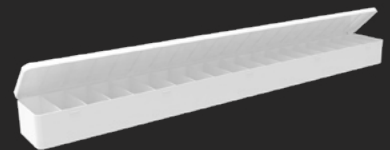
Available in these quantities:

- 100 units per carton
- 1,600 units per pallet
- 16,000 units per 20 ft container (packed in cartons of 100 units)
- 35,200 units per 40 ft container (packed in cartons of 100 units)

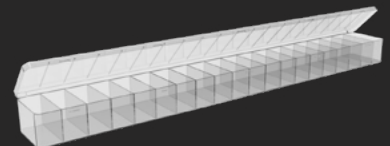
10-Compartment Small



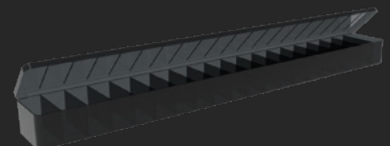
10-Compartment Large



White
20-Compartment



Clear
20-Compartment



Black
20-Compartment



Lifetime Warranty applies when Chip Trays are used as intended, which is for storing, transporting and analysis of rock chips and being structurally sound. Excludes Chip Trays being emptied and reused time after time.

20ft Core Cutting Container



SCAN THE QR CODE FOR MORE DETAILS

Why let your core shed staff put up with the noise, dust and dirt of the core saw, when you can have a safe and airconditioned space just for your core saw and its operator?

Cutting core can be tedious, but now your core saw operator can be more comfortable in this fully insulated container. Keep your logging workflow seamless by placing the container beside your core shed. You can feed core trays through the opening in one end of the container straight from

the core shed feed line, cut the core, and then let the trays go back out the rear end.

It's portable, safe to manoeuvre and easy to relocate. Most importantly, it boosts efficiency by dramatically improving operator comfort.

Code	Available Variants	Unit
DYNOCON+	Discoverer® Air-Conditioned Automatic Core Cutting Container Facility, includes Corewise Saw and Roller Racking	EACH
DYNOCONR	Discoverer® Air-Conditioned Automatic Core Cutting Container Facility, includes Roller Racking	EACH
DYNOCON	Discoverer® Air-Conditioned Automatic Core Cutting Container Facility, unit only	EACH

What's Included:

- Corewise Auto Core Saw
- Corewise Water Recirculation Tank
- Roller Racking - Entry Racks in the door and Exit Racks out the rear
- Split system air conditioner
- Internal Lighting
- Anti Fatigue Matting
- Personnel Door in Side of Container
- 3 Phase Power Sockets
- PVC Air Curtains



Roller Racking

Set up a seamless logging workflow in your core shed.

We stock a wide range of gravity roller table conveyors to suit any core shed application and have designed many systems.

Take advantage of our **Complimentary Core Shed Design** through these 3 easy steps:

1. Send us your core shed measurements.
2. Review our professionally drawn-up core shed layout that even comes with a video walkthrough.
3. Sign off on the drawing. Finalise the quote and place your order.

Code	Available Sizes	Unit
CONVST30	3m Straight Conveyor Frame To Suit 600mm Rollers	EACH
CONVCV90	90 Degree Conveyor Curve 600mm Rollers. Includes 3 x Support Legs & Rollers	EACH
CONVGT90	2m Conveyor Gate Section (1m Gate), Includes Legs & 600mm Rollers	EACH
SUPLEG	Adjustable Height Support Legs to suit 600mm Racking	EACH
TFRTBL	Ball Transfer Insert 600mm x 600mm	EACH
ROLSTMET	600mm Zinc Steel Gravity Rollers	EACH
PLLF2000	Spring Loaded Pallet Lifter / Positioner - 2000KG Capacity	EACH
LOGTROL	Core Orientation Roller Racking Logging Trolley - Tiered - 1800 Long with Laptop Stand and Marker Tray	EACH
CONVST15	1.5m Straight Conveyor Frame To Suit 600mm Rollers	EACH
CONVST3045	3m Straight Conveyor Frame To Suit 400mm Rollers	EACH
CONVST1545	1.5m Straight Conveyor Frame To Suit 400mm Rollers	EACH
SUPLEG45	Adjustable Height Support Legs to suit 400mm Racking	EACH
ROLSTMET45	400mm Zinc Steel Gravity Rollers	EACH



SCAN THE QR CODE FOR MORE DETAILS

Standard Roller Racking Components



Conveyor Gate



Curved Roller



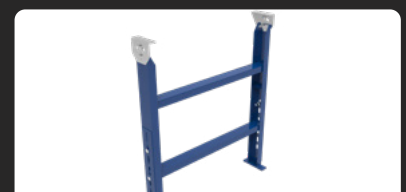
Logging Trolley



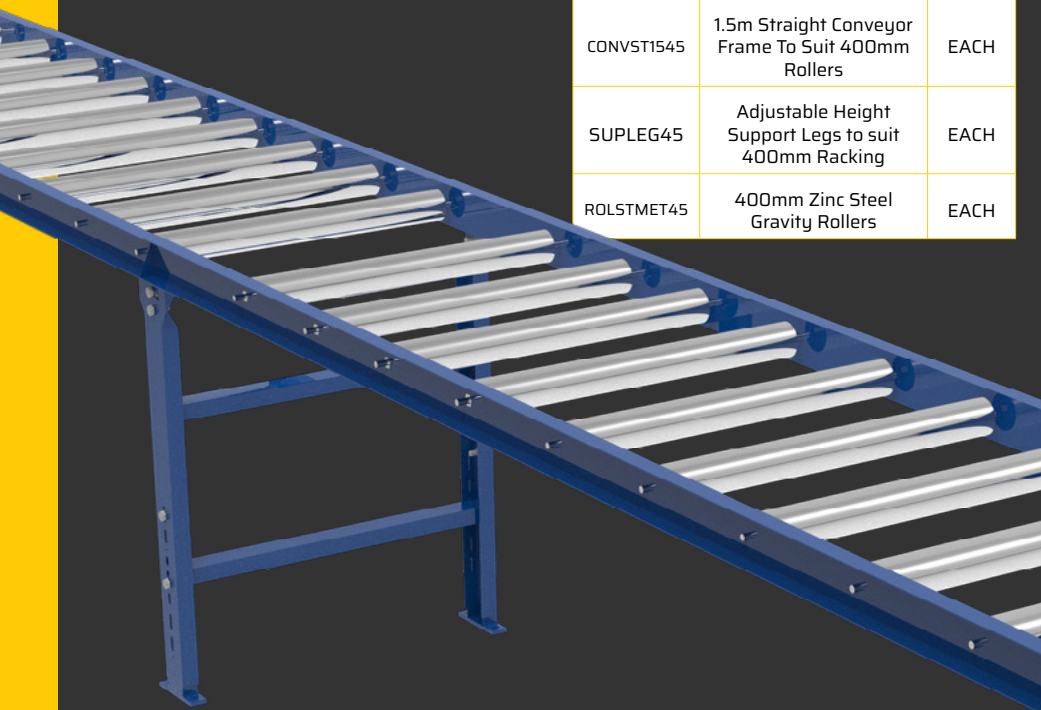
Roller



Straight Roller



Support Legs

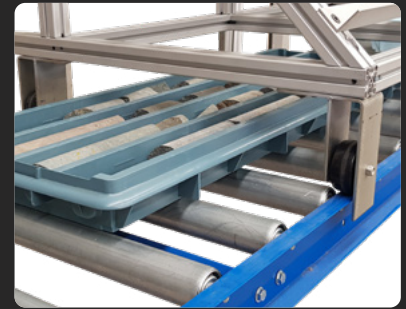
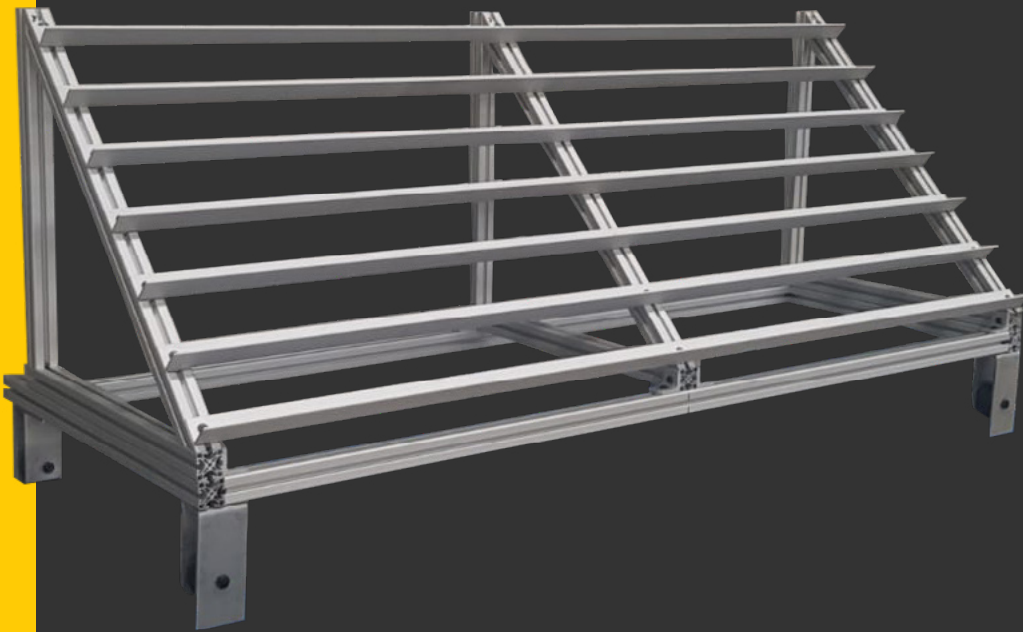


Core Orientation Logging Trolley

Say goodbye to hunching over core trays! Place your core barrels on the trolley and do your regular annotations with your back straight and safeguarded.



SCAN THE QR CODE
FOR MORE DETAILS



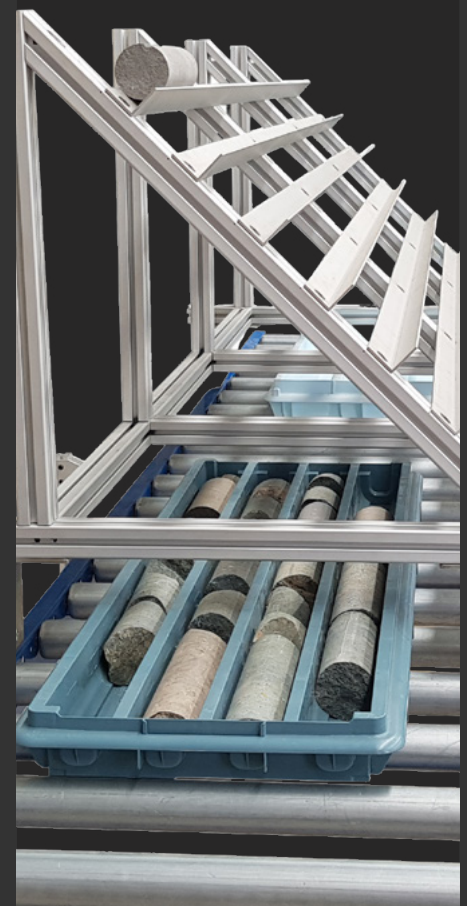
Robust yet liftable

Made from a thick gauge aluminium extrusion, it will last the distance in the core shed, but it's still light enough to be lifted from rack to rack if necessary.

Can be custom-fit to your racking

The trolley is built to prop up on your roller racking, right above your core trays for convenient access to the core.

Code	Available Sizes	Unit
COLT9M	Discoverer® Core Orientation Logging Trolley 9m Capacity (1.5m Length)	EACH
COLT18M	Discoverer® Core Orientation Logging Trolley 18m Capacity (3m Length)	EACH

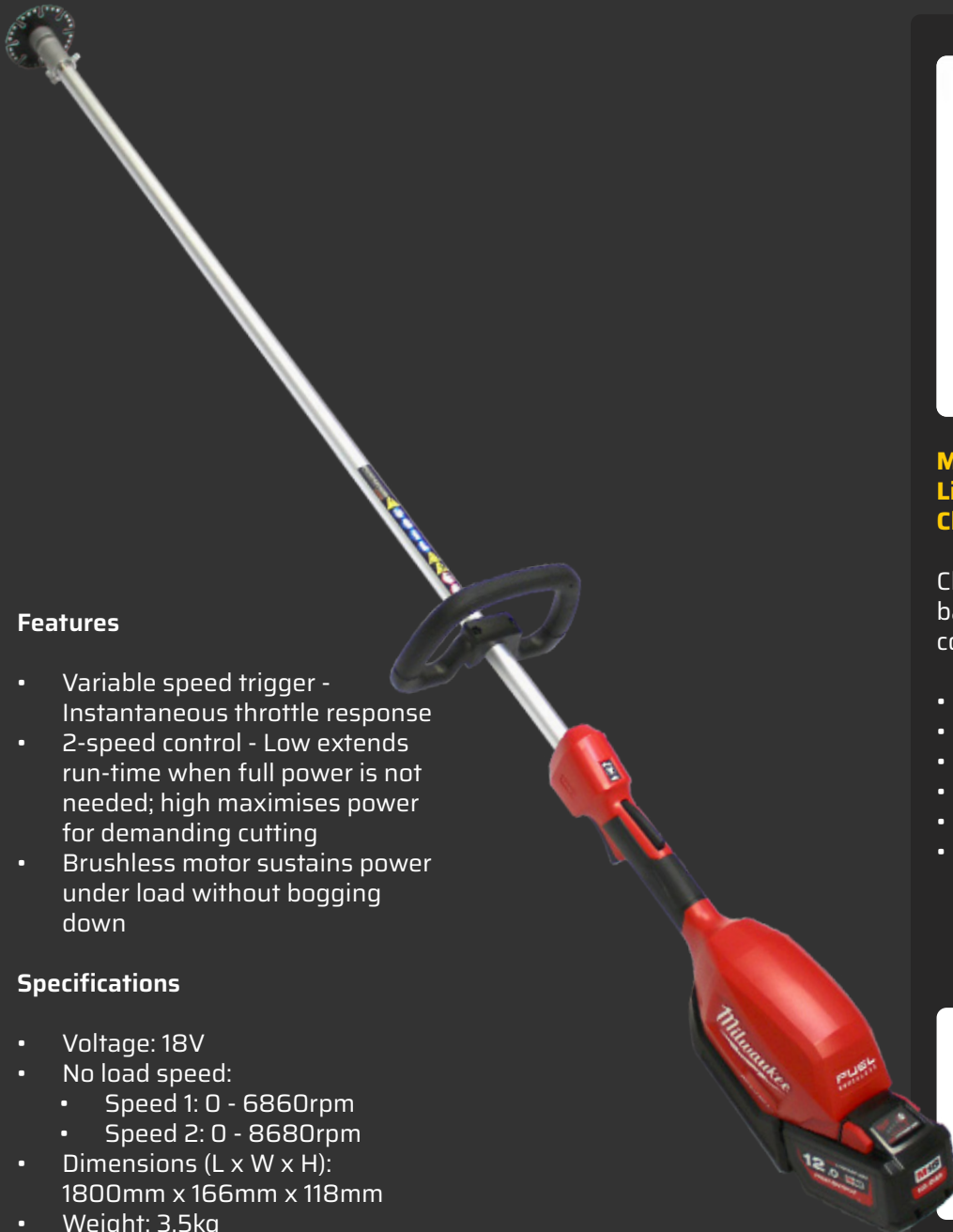


Milwaukee 18V Battery Collar Cutter

Gone are the days of having to store highly flammable petrol on-site! This battery-operated collar cutter is safe and high-performance.



SCAN THE QR CODE FOR MORE DETAILS



Features

- Variable speed trigger - Instantaneous throttle response
- 2-speed control - Low extends run-time when full power is not needed; high maximises power for demanding cutting
- Brushless motor sustains power under load without bogging down

Specifications

- Voltage: 18V
- No load speed:
 - Speed 1: 0 - 6860rpm
 - Speed 2: 0 - 8680rpm
- Dimensions (L x W x H): 1800mm x 166mm x 118mm
- Weight: 3.5kg



Milwaukee M12-18AC 12V - 18V Li-ion Automotive Car Battery Charger (optional)

Charge your Milwaukee batteries on the go using conventional 12V sockets.

- Voltage: 12V, 18V
- Battery type: Li-ion
- Charge Time:
 - 6.0Ah: 120 minutes
 - 12Ah: 240 minutes
- Weight: 0.83kg

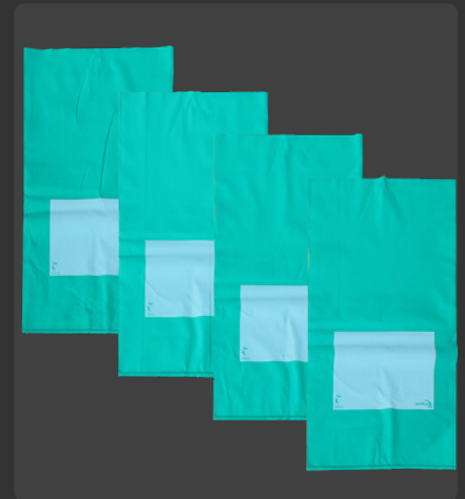


Code	Available Items	Unit
BOCC+	Milwaukee 18V Collar Cutter Kit	EACH
12V18V-DFC	12V/18V Dual Fast Car Charger (optional)	EACH
CCB100	Collar Cutter Blade	EACH
BOCCSKIN	Milwaukee 18V Collar Cutter - Skin Only	EACH

Profab® **SAMPLEX™**

Geological Sample Bags

ProFab® and Samplex® — The trusted names in Sample Bags



Superior Drawstring Calico Sample Bags

Retain your samples in these reliable drawstring bags.



SCAN THE QR CODE FOR MORE DETAILS

The ProFab® brand of calico bags has been popular with geologists for their fine woven qualities. Suitable for retaining fine samples

in RC drilling or larger samples when diamond drilling, they have double-stitched seams and a tough, durable drawstring.

Code	AVAILABLE SIZES	Unit
CALB2030D	ProFab™ Superior Calico 200x300mm (8"x12"), 1000/CTN	CTN
CALB2535D	ProFab™ Superior Calico 250x350mm (10"x14"), 500/CTN	CTN
CALB3038D	ProFab™ Superior Calico 300x380mm (12"x15"), 500/CTN	CTN
CALB3045D	ProFab™ Superior Calico 300x450mm (12"x18"), 500/CTN	CTN
CALB3560D	ProFab™ Superior Calico 350x600mm (14"x24"), 300/CTN	CTN
CALB4575D	ProFab™ Superior Calico 450x750mm (18"x30"), 200/CTN	CTN
CALB6090D	ProFab™ Superior Calico 600x900mm (24"x26"), 100/CTN	CTN



Superior Pre-Numbered Drawstring Calico Sample Bags



SCAN THE QR CODE FOR MORE DETAILS

Pre-numbered for easier identification.

Made of high stitch count calico, these are equipped with a naturally polished drawstring. They are printed with a water-resistant, and insect- and mildew-proof sequential number on the front, in your specified alphanumeric configuration.

Numbers are easy to read, with an industry-exclusive 45mm high print. Printing requests are accommodated with quick turnaround times against industry standards.



Code	AVAILABLE SIZES	Unit
CALB2030DP	ProFab™ Superior Pre-Numbered Calico 200x300mm (8'x12"), 1000/CTN	CTN
CALB2535DP	ProFab™ Superior Pre-Numbered Calico 250x350mm (10x14"), 500/CTN	CTN
CALB3038DP	ProFab™ Superior Pre-Numbered Calico 300x380mm (12x15"), 500/CTN	CTN
CALB3045DP	ProFab™ Superior Pre-Numbered Calico 300x450mm (12x18"), 500/CTN	CTN
CALB3560DP	ProFab™ Superior Pre-Numbered Calico 350x600mm (14x24"), 300/CTN	CTN
CALB4575DP	ProFab™ Superior Pre-Numbered Calico 450x750mm (18x30"), 200/CTN	CTN
CALB6090DP	ProFab™ Superior Pre-Numbered Calico 600x900mm (24x26"), 200/CTN	CTN



Superior Pre-Numbered & Barcoded Drawstring Calico Bags



SCAN THE QR CODE FOR MORE DETAILS

Pre-numbered and barcoded for easier identification and tracking.

High stitch count calico equipped with a naturally polished drawstring, they are printed with a water-resistant, and insect- and mildew-proof sequential printed number on the front, in your specified alphanumeric configuration. Then supplied with a barcode tag that's resistant to

weather, heat, tear and water. Barcode format is customisable to your preferences, and either stapled or sewn into the bag seam.

Lead times are typically 4-6 months. We recommend you bulk stock for your forward planned programs.



Code	AVAILABLE SIZES	Unit
CALB2030DNB	ProFab™ Superior Pre-Numbered and Barcoded Calico 200x300mm (8'x12"), 1000/CTN	CTN
CALB2535DNB	ProFab™ Superior Pre-Numbered and Barcoded Calico 250x350mm (10x12"), 500/CTN	CTN
CALB3038DNB	ProFab™ Superior Pre-Numbered and Barcoded Calico 300x380mm (12x15"), 500/CTN	CTN
CALB3045DNB	ProFab™ Superior Pre-Numbered and Barcoded Calico 300x450mm (12x18"), 500/CTN	CTN
CALB3560DNB	ProFab™ Superior Pre-Numbered and Barcoded Calico 350x600mm (14x24"), 300/CTN	CTN
CALB4575DNB	ProFab™ Superior Pre-Numbered and Barcoded Calico 450x750mm (18x30"), 200/CTN	CTN
CALB6090DNB	ProFab™ Superior Pre-Numbered and Barcoded Calico 600x900mm (24x26"), 200/CTN	CTN



Green Heavy Duty Plastic Bags

Highest levels of UV stabiliser make these one of the most heavy duty bags in the market.

The white panel on these bags can be used to print any sequential alphanumeric digits with a large 45mm high print. This eliminates human error, and saves your people's valuable time from the tedious task of labeling the bags themselves.

Generally we print on the larger 600x900mm bags, but we can accommodate printing on the smaller bags if required. Just ask!



SCAN THE QR CODE FOR MORE DETAILS

Code	AVAILABLE SIZES	Unit
PLAB2030	Samplex® Green UV Stabilized Plastic Bags 200x300mm (125um), 500/CTN	CTN
PLAB2538	Samplex® Green UV Stabilized Plastic Bags 250x380mm (150um), 500/CTN	CTN
PLAB3046	Samplex® Green UV Stabilized Plastic Bags 300x460mm (150um), 200/CTN	CTN
PLAB4060	Samplex® Green UV Stabilized Plastic Bags 400x600mm (150um), 200/CTN	CTN
PLAB4575	Samplex® Green UV Stabilized Plastic Bags 450x750mm (150um), 200/CTN	CTN
PLAB6090	Samplex® Green UV Stabilized Plastic Bags 600x900mm (150um), 100/CTN	CTN
PLAB6090P	Samplex® Pre-Numbered Green UV Stabilized Plastic Bags 600x900mm (150um), 100/CTN	CTN



Key Product Features

- Easy-to-read, large white write-on panel
- Tough and burst resistant, with double-welded bottom seal
- Improved puncture resistance virgin plastic
- Last longer even in sunlight
- Large stock holdings for immediate dispatch



EnviroBag RC Green Sample Bags

Finally, a 100% compostable and biodegradable geological sample bag that's tough for your samples, but soft on Mother Earth.

It's essentially the same heavy duty green bag that's proven in the field. But this one is made from starch and a compostable bio-polymer, so it's sustainable, eco-friendly and fulfills your corporate social responsibility.

These bags are certified to AS 4736 standards, which is your watertight guarantee that they will compost. When buried, organisms in the soil will quickly break them down into a pile of dirt.



SCAN THE QR CODE FOR MORE DETAILS

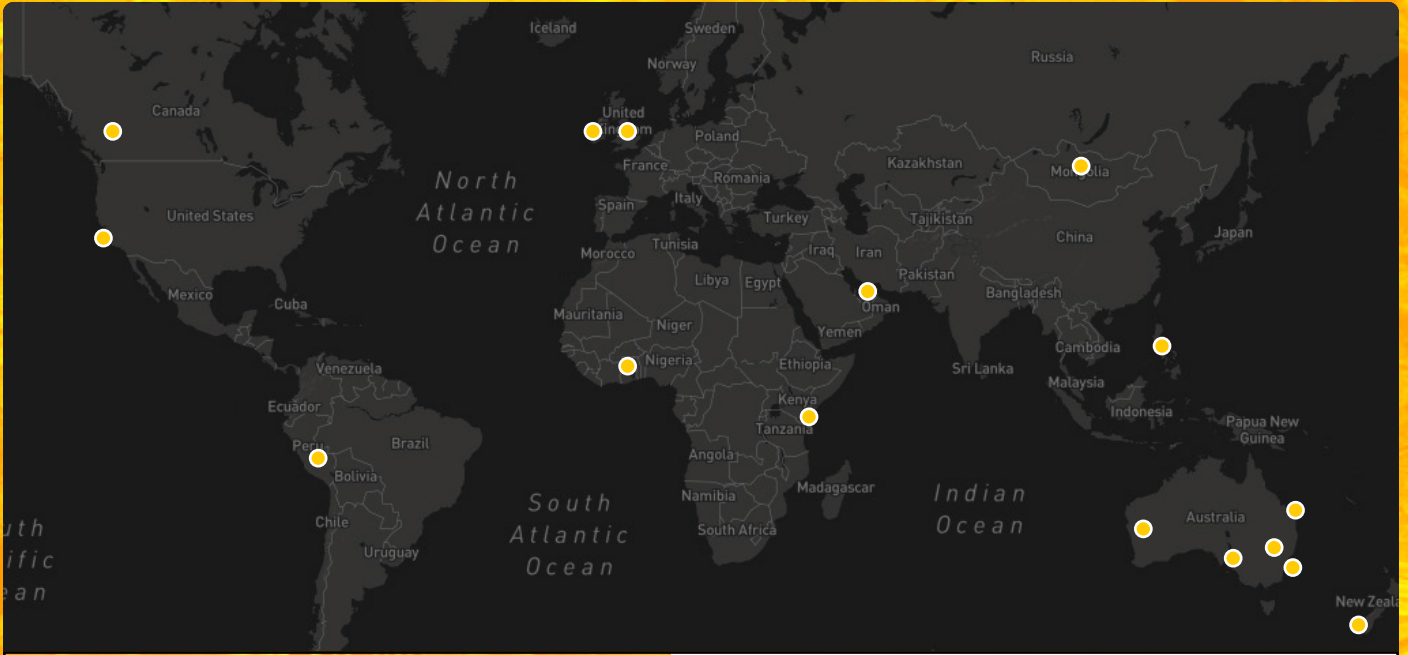


Code	AVAILABLE SIZES	Unit
PLAB2030-B	Samplex® Enviro Bags 200x300mm (125um), 500/CTN	CTN
PLAB2538-B	Samplex® Enviro Bags 250x380mm (150um), 500/CTN	CTN
PLAB3046-B	Samplex® Enviro Bags 300x460mm (150um), 200/CTN	CTN
PLAB4060-B	Samplex® Enviro Bags 400x600mm (150um), 200/CTN	CTN
PLAB4575-B	Samplex® Enviro Bags 450x750mm (150um), 200/CTN	CTN
PLAB6090-B	Samplex® Enviro Bags 600x900mm (150um), 100/CTN	CTN
PLAB6090P-B	Samplex® Pre-Numbered Enviro Bags 600x900mm (150um), 100/CTN	CTN




Key Product Features

- 100% microorganism- and fungi-certified compostable
- Durable and burst resistant
- Puncture resistant; can retain sharp and abrasive core samples
- Waterproof and retains moisture
- Easy-to-read, large white write-on panel



Reducing the environmental impact of mining and exploration while preserving the integrity of your core

Contact us today for your nearest distributor:

Email	sales@discoverercoretrays.com
Website	discoverercoretrays.com
Social Media	 Discoverer® Recycled Plastic Core Trays